

NOTE: DO NOT DISCARD the Parts List from the Instruction Bulletin. Place the Parts List in the appropriate place in the machine manual for future reference. Retaining the Parts List will make it easier to reorder individual parts and will save the cost of ordering an entire kit.

NOTE: Numbers in parenthesis () are reference numbers for parts listed in Bill of Materials.

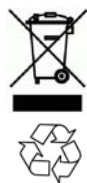
Installation instructions for **kit number 9017206**

SYNOPSIS:

This kit contains the parts needed to install a headlight kit onto the M17 sweeper- scrubber.
Please follow step-by-step instructions.

SPECIAL TOOLS / CONSIDERATIONS: NONE

(Estimated time to complete: 1.5 hours)



PROTECT THE ENVIRONMENT

Please dispose of packaging materials, used machine components such as batteries and fluids in an environmentally safe way according to local waste disposal regulations.

Always remember to recycle.

PREPARATION:

1. Stop the machine on a clean level surface and set the parking brake.
2. Slightly raise the hopper and roll the hopper completely out. (Fig. 1)

 **WARNING: Lift arm pinch point. Stay clear of hopper lift arms.**

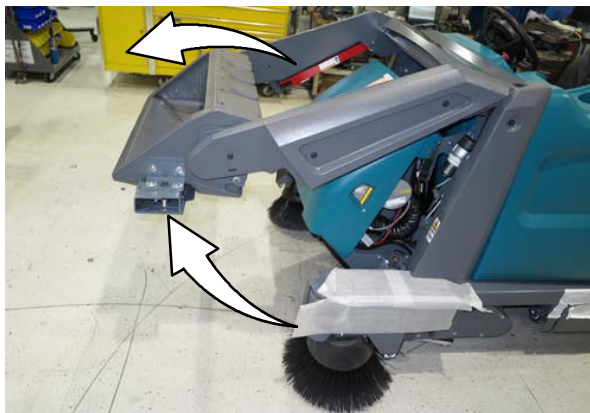


FIG. 1

3. Turn off the machine and remove the key.

FOR SAFETY: Before leaving or servicing machine, stop on level surface, turn off machine, set parking brake, and remove key.

4. Use jack stands or a hoist to hold the hopper into the raised position.
5. Disconnect the battery cable from the machine.

 **WARNING: Always disconnect battery cables from machine before working on electrical components.**

INSTALLATION:

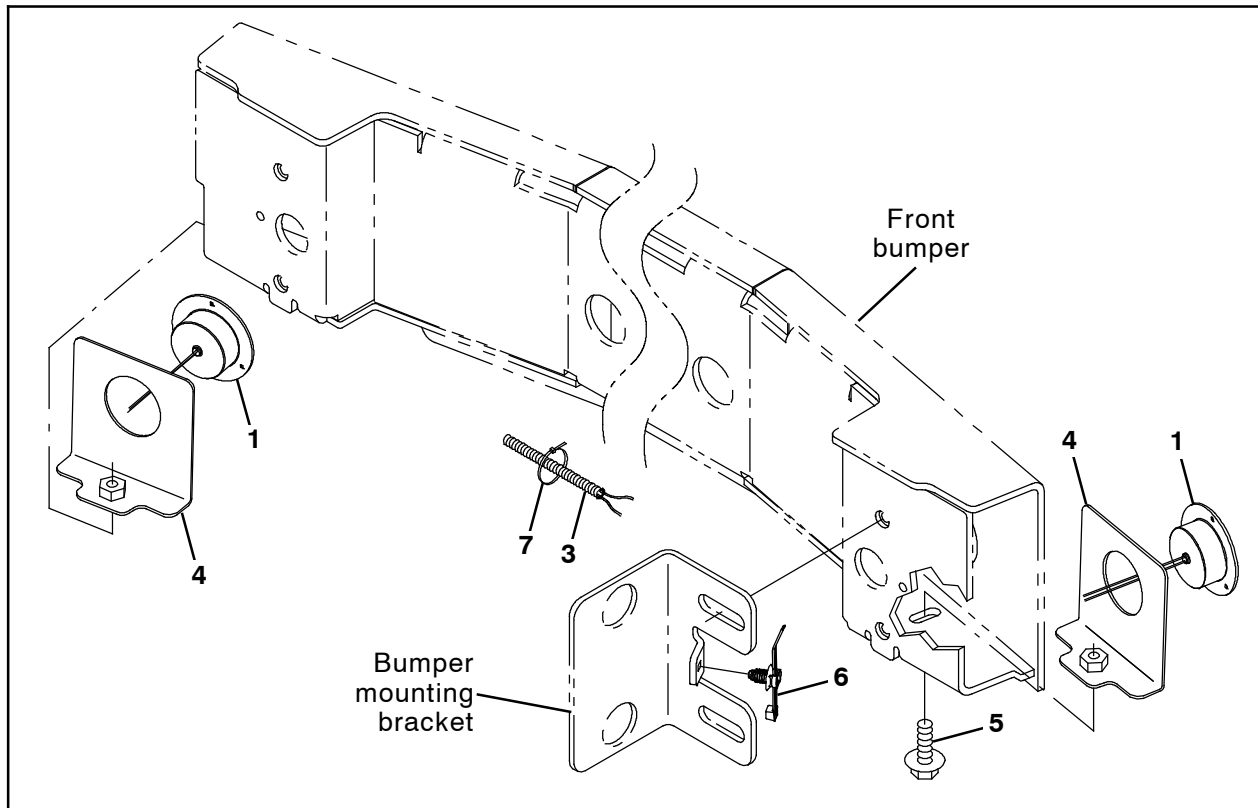


FIG. 2

1. Remove both plugs from the front bumper and discard the plugs. (Fig. 3)

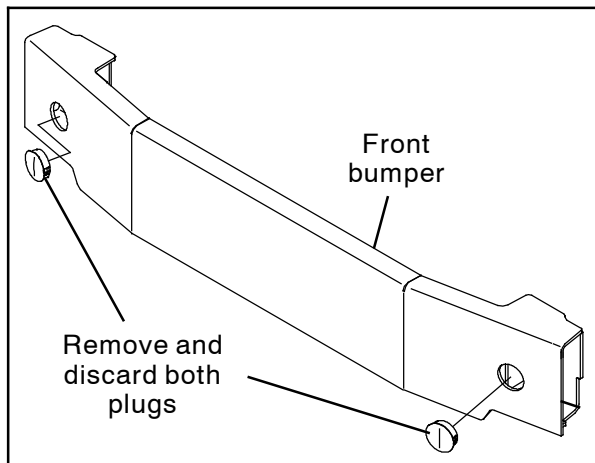


FIG. 3

2. Crimp a bullet terminal (8) onto both wires from each LED light (1).

3. Insert an LED light (1) into one of the headlight brackets (4) and use one SEM M8 hex screw (5) to install the LED light / headlight bracket into one side the front bumper. Repeat to install the remaining LED light / headlight bracket into the other side of the front bumper. (Fig. 2)

4. Connect the headlight harness (3) to the main wire harness connector located under the front lintel. (Fig. 6 / Fig. 7)

5. Route the headlight harness (3) down the right side lift arm and to the LED light (1) located on the right side of the machine and connect the headlight harness to the LED light. (Fig. 2 / Fig. 6 / Fig. 7)

6. Route the headlight harness (3) to the LED light (1) located on the left side of the machine and connect the headlight harness to the LED light. (Fig. 2 / Fig. 6 / Fig. 7)

7. Install the wire tie (6) into the bumper mounting bracket. (Fig. 2)

8. Use the wire tie (6) to secure the headlight harness (3) to the bumper mounting bracket. (Fig. 2)

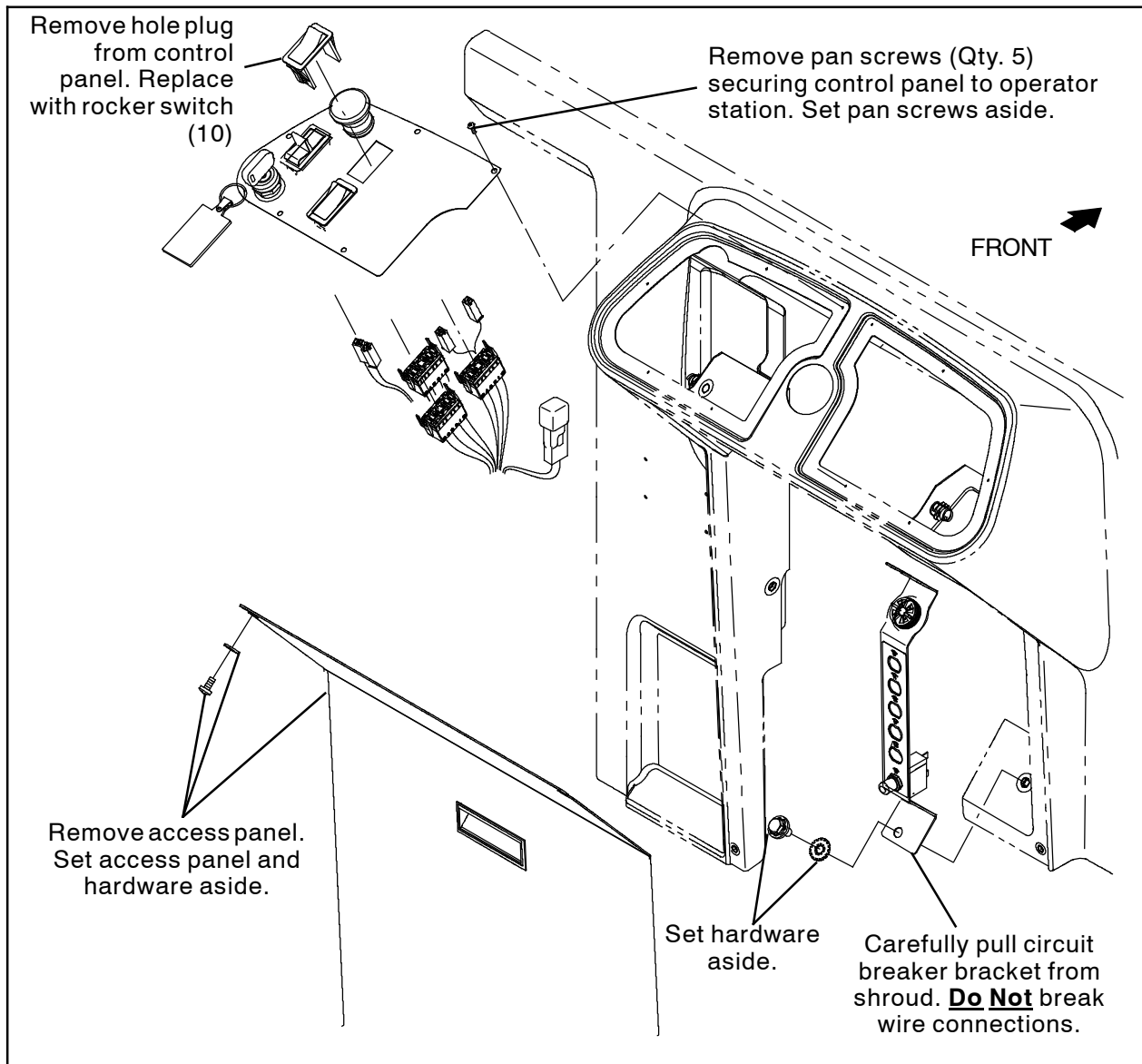


FIG. 4

NOTE: The rocker switch (1) does not need to be installed into the control panel if the machine is equipped with a warning light. A rocker switch is already installed. Proceed to Step 15.

9. Remove the hardware securing the control panel to the front shroud. Set the hardware aside. (Fig. 4)
10. Remove the control panel from the front shroud. **Do Not** break wire / cable connections. (Fig. 4)
11. Remove the plug from the control panel. Discard the plug. (Fig. 4)
12. Insert the rocker switch (1) into the location in the control panel where the plug was previously located. (Fig. 4 / Fig. 5)
13. Connect the main wire harness to the rocker switch (1). (Fig. 5 / Fig. 6 / Fig. 7)
14. Reinstall the control panel onto the machine. (Fig. 4 / Fig. 5)
15. Remove the M8 hex screws and lock washers securing the circuit breaker bracket to the machine. Set the M8 hex screws and lock washers aside. (Fig. 4)
16. Carefully pull circuit breaker bracket out far enough to access the main wire harness connectors located behind the bracket. **Do Not** break any wire connections. (Fig. 4)

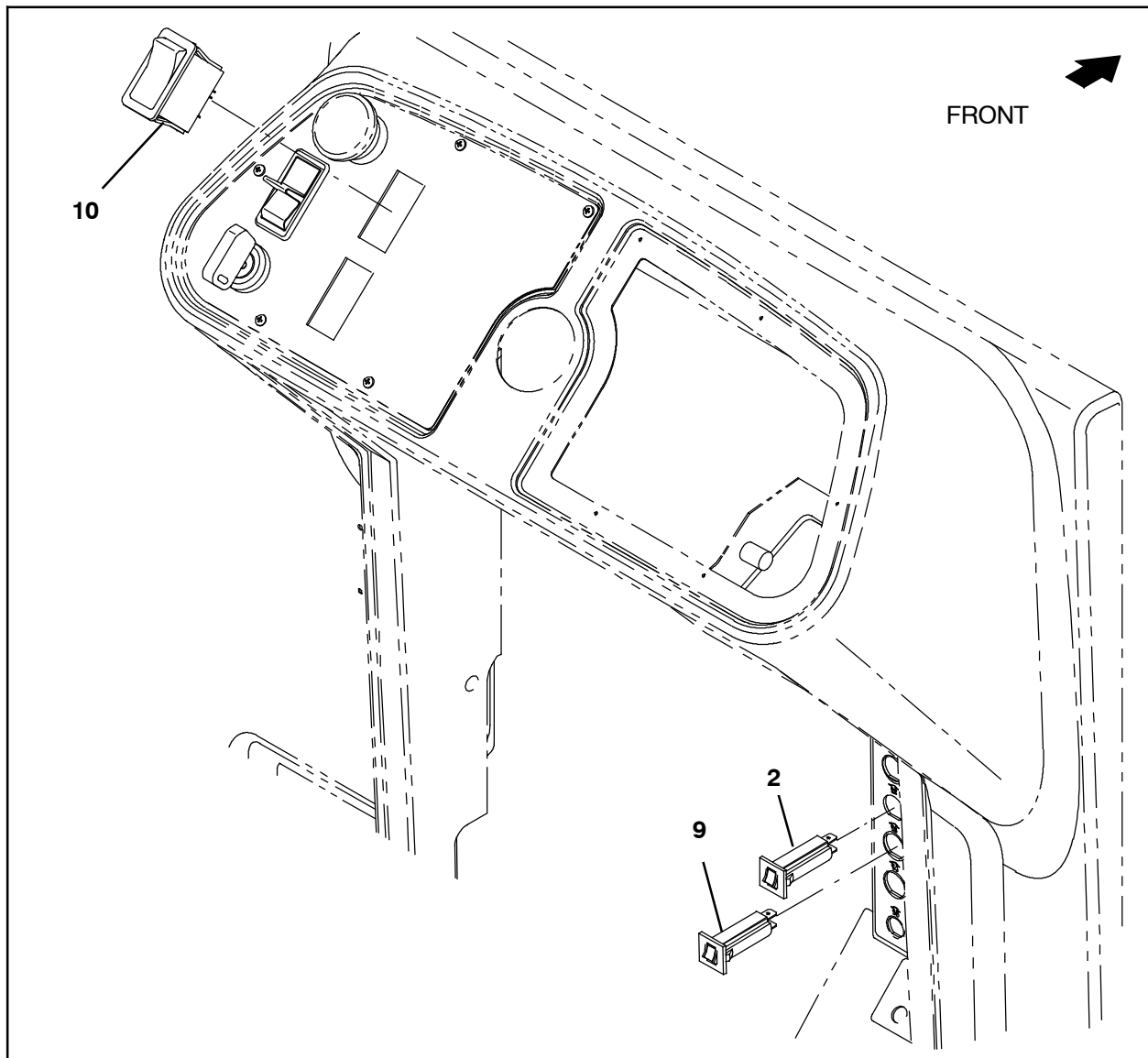


FIG. 5

17. Insert the 2.5- Amp circuit breaker (3) into circuit breaker location 12 in the circuit breaker bracket. (Fig. 5 / Fig. 6 / Fig. 7)

18. Connect the main wire harness to the 2.5- Amp circuit breaker (3) installed in the previous step. (Fig. 5 / Fig. 6 / Fig. 7)

NOTE: The 15- Amp circuit breaker does not need to be installed if the machine is equipped with a warning light. A 15- Amp circuit breaker will already be installed. Proceed to Step 21.

19. Insert the 15- Amp circuit breaker (2) into circuit breaker location 11 in the circuit breaker bracket. (Fig. 5 / Fig. 6)

20. Connect the main wire harness to the 15- Amp circuit breaker (2) installed in the previous step. (Fig. 5 / Fig. 6 / Fig. 7)

21. Reinstall the circuit breaker bracket onto the machine. (Fig. 4)

22. Reinstall the access panel onto the machine. (Fig. 4)

23. Reconnect the battery cable to the machine.

24. Remove the jack stands or hoist holding hopper into the raised position.

25. Start the machine, lower the hopper, and test the machine. Place the light switch into the ON position. Ensure both headlights function.

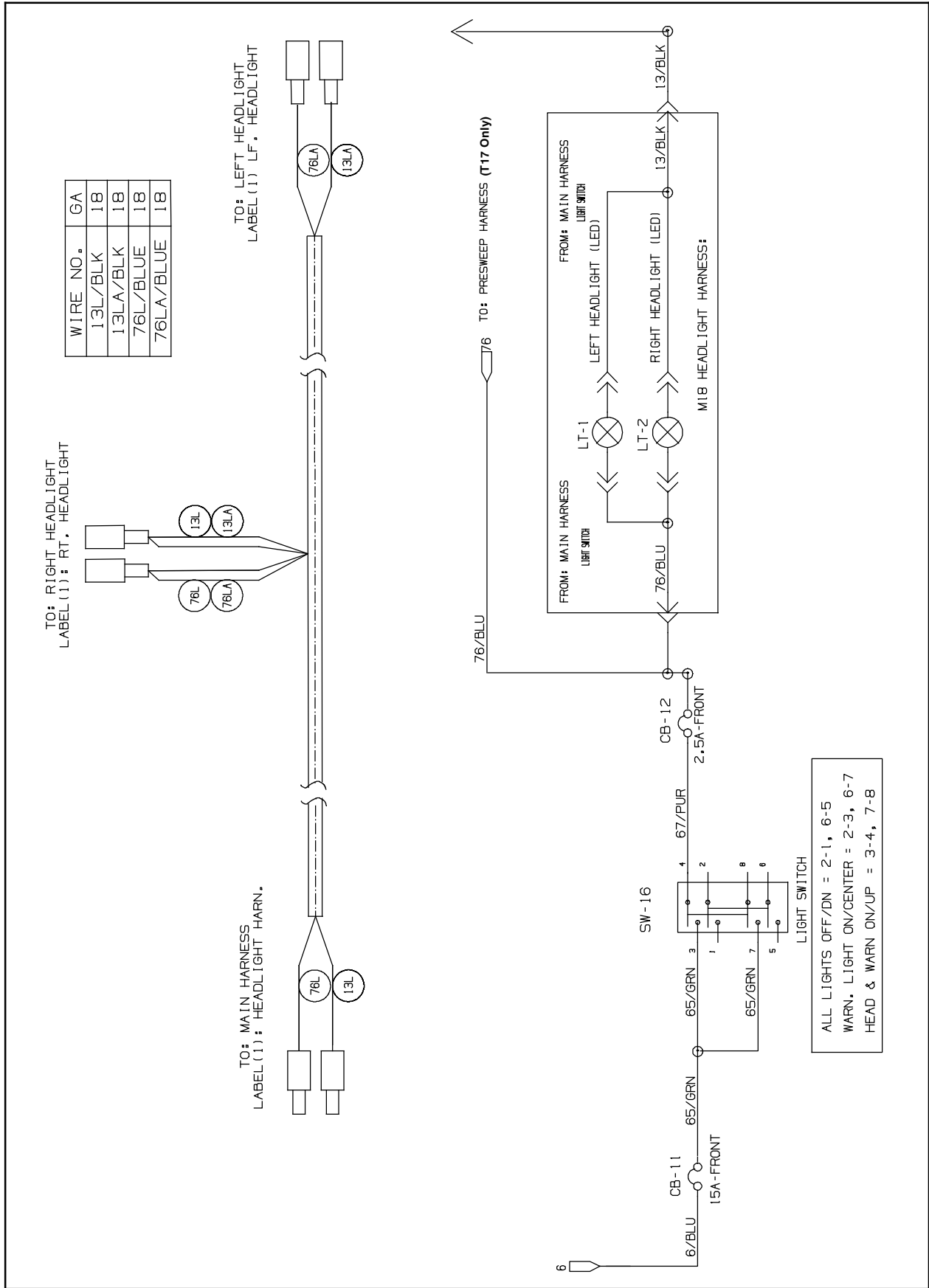


FIG. 6

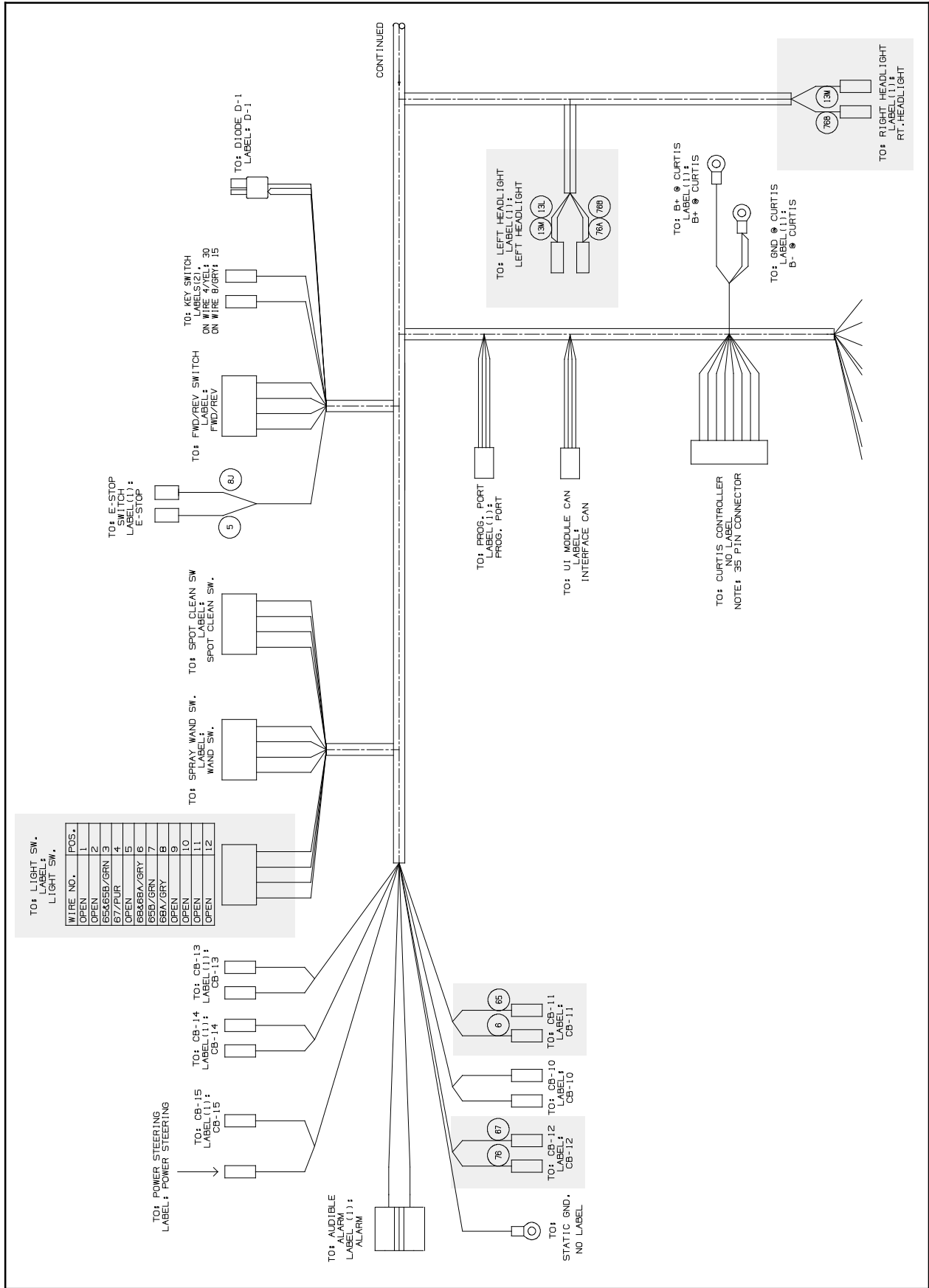


FIG. 7

Bill Of Materials For Light Assy, Front, DI [M17] - 9017206

Ref.	Tennant Part No.	Description	Qty.
1	1058004	Light, LED, 36VDC	2
2	1064184	Circuit Breaker, 02.5A, Resettable	1
3	1074672	Harness, Ele [Headlights, M17]	1
4	1218994	Bracket Wldt, Housing, Headlight	2
5	1037346	Screw, Hex, M8 X 1.25 X 25, 9.8, SEMS	2
6	1210807	Wire, Tie [w/.25" Fir Tree Clip]	1
7	763114	Tie, Cable, 11.3L, 2.75D Max	2
8	383820	Terminal, Bullet, Mal, .156D 22- 18GA	4
9	1064188	Circuit Breaker, 15.0A, Resettable	1
10	377084	Switch, Rocker, Prgrsv	1

TENNANT COMPANY
P. O. Box 1452
Minneapolis, MN 55440-1452